



**COSMO WHALES
WHITEPAPER**

CONTENTS

INTRODUCTION, THE IDEA, DEVELOPMENT

3

EXPLORING THE GALAXY, BATTLES AND MISSIONS
ECONOMY AND MARKETPLACE

4

WHOLE DEVELOPMENT AND EVOLUTION, SOCIAL ASPECTS,
FUTURE UPDATES

5

LEVELING UP, WEAPONS AND EQUIPMENT, SUITS

6

HELMET

8

GUNS

9

HEROES

11

WALLET AND TOKEN

15

THE CREATION STORY OF "COSMO WHALES"

INTRODUCTION

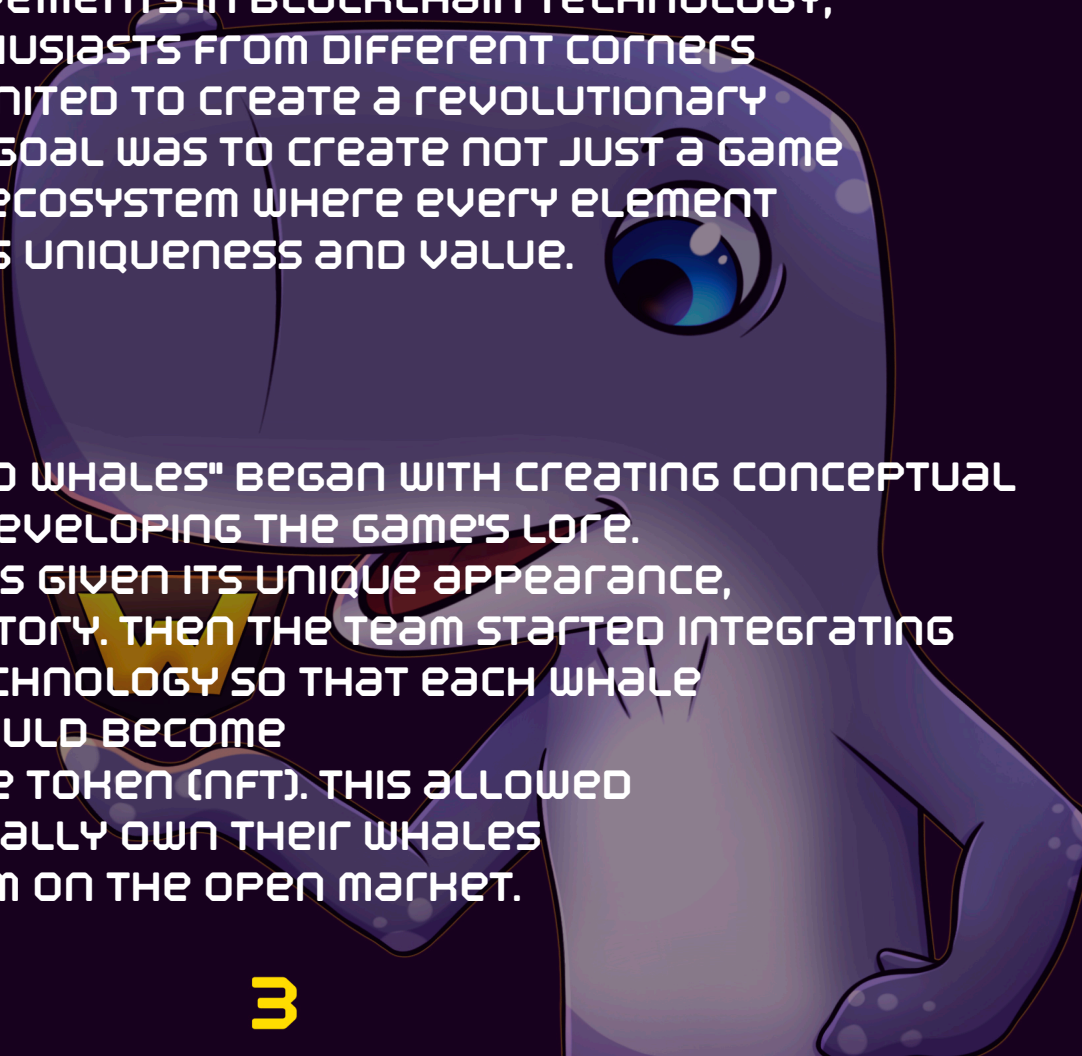
IN THE DISTANT FUTURE, WHEN HUMANITY HAD ALREADY COLONIZED NUMEROUS PLANETS AND MASTERED INTERGALACTIC TRAVEL, A GROUP OF SCIENTISTS AND PROGRAMMERS DECIDED TO CREATE A UNIQUE UNIVERSE - A WORLD WHERE EVERYONE COULD MANAGE THEIR OWN COSMIC WHALE. THUS BEGAN THE STORY OF THE CREATION OF THE GAME "COSMO WHALES."

THE IDEA

INSPIRED BY ANCIENT MYTHS ABOUT WHALES CARRYING ENTIRE WORLDS ON THEIR BACKS AND MODERN ACHIEVEMENTS IN BLOCKCHAIN TECHNOLOGY, A TEAM OF ENTHUSIASTS FROM DIFFERENT CORNERS OF THE EARTH UNITED TO CREATE A REVOLUTIONARY PROJECT. THEIR GOAL WAS TO CREATE NOT JUST A GAME BUT AN ENTIRE ECOSYSTEM WHERE EVERY ELEMENT WOULD HAVE ITS UNIQUENESS AND VALUE.

DEVELOPMENT

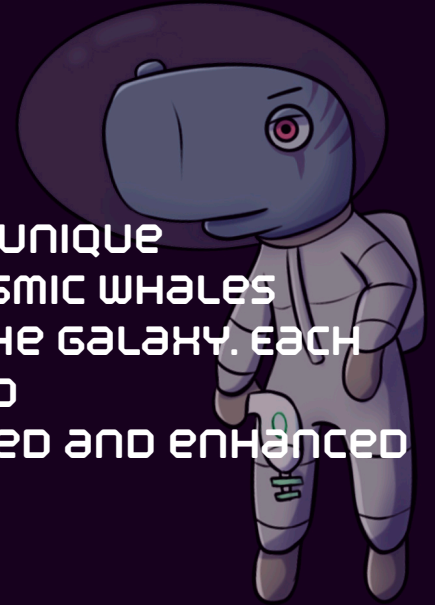
WORK ON "COSMO WHALES" BEGAN WITH CREATING CONCEPTUAL ARTWORK AND DEVELOPING THE GAME'S LORE. EACH WHALE WAS GIVEN ITS UNIQUE APPEARANCE, ABILITIES, AND STORY. THEN THE TEAM STARTED INTEGRATING BLOCKCHAIN TECHNOLOGY SO THAT EACH WHALE IN THE GAME WOULD BECOME A NON-FUNGIBLE TOKEN (NFT). THIS ALLOWED PLAYERS TO LEGALLY OWN THEIR WHALES AND TRADE THEM ON THE OPEN MARKET.



GAMEPLAY OF "COSMO WHALES"

EXPLORING THE GALAXY

IN "COSMO WHALES," PLAYERS HAVE THE UNIQUE OPPORTUNITY TO MANAGE THEIR OWN COSMIC WHALES AND EXPLORE THE VAST EXPANSES OF THE GALAXY. EACH WHALE POSSESSES UNIQUE ABILITIES AND CHARACTERISTICS THAT CAN BE DEVELOPED AND ENHANCED AS THE GAME PROGRESSES.



BATTLES AND MISSIONS

PLAYERS CAN SEND THEIR WHALES ON VARIOUS MISSIONS, FIGHT SPACE PIRATES, AND FACE OTHER COSMIC DANGERS. EACH MISSION BRINGS EXPERIENCE AND REWARDS THAT CAN BE USED TO UPGRADE WHALES AND ACQUIRE NEW ABILITIES. THE GAME FEATURES BOTH SOLO MISSIONS AND COOPERATIVE TASKS, WHERE PLAYERS CAN TEAM UP TO TACKLE CHALLENGING OBJECTIVES.

ECONOMY AND MARKETPLACE

"COSMO WHALES" OFFERS A DEEP ECONOMIC SYSTEM BASED ON THE WHALE TOKEN. PLAYERS CAN EARN WHALE TOKENS BY PARTICIPATING IN MISSIONS, BATTLES, AND TRADING. TOKENS CAN BE USED TO PURCHASE NEW WHALES, UPGRADES, AND RARE ITEMS. THE GAME ALSO FEATURES A MARKETPLACE WHERE PLAYERS CAN BUY AND SELL WHALES AND ITEMS TO EACH OTHER USING WHALE TOKENS.

GAMEPLAY OF "COSMO WHALES"

WHALE DEVELOPMENT AND EVOLUTION

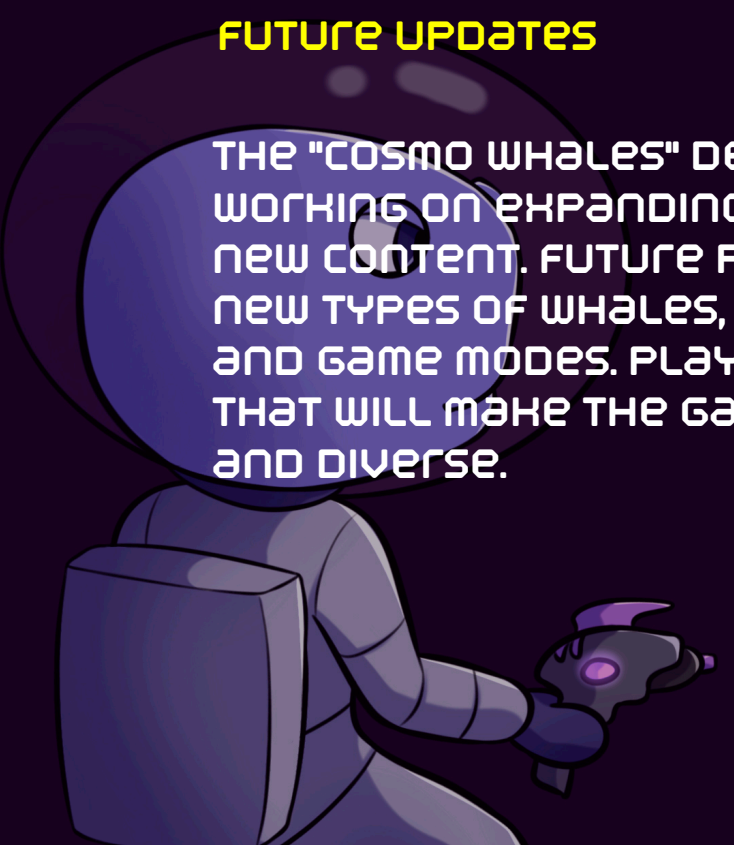
EACH WHALE IN THE GAME GOES THROUGH SEVERAL STAGES OF DEVELOPMENT. PLAYERS START WITH BABY WHALES THAT GRADUALLY EVOLVE INTO MORE POWERFUL AND ADVANCED FORMS. THE EVOLUTION PROCESS REQUIRES TIME AND RESOURCES, BUT THE RESULT IS WORTH THE EFFORT: STRONGER AND UNIQUE WHALES CAPABLE OF COMPLETING CHALLENGING MISSIONS AND BATTLING FORMIDABLE OPPONENTS.

SOCIAL ASPECTS

"COSMO WHALES" INCLUDES VARIOUS SOCIAL FEATURES ALLOWING PLAYERS TO INTERACT WITH EACH OTHER. PLAYERS CAN FORM ALLIANCES, JOIN GUILDS, AND PARTICIPATE IN COOPERATIVE EVENTS. THE GAME OFFERS BOTH FRIENDLY AND COMPETITIVE ELEMENTS, WHERE PLAYERS CAN COMPETE FOR LEADERSHIP IN THE GALAXY.

FUTURE UPDATES

THE "COSMO WHALES" DEVELOPMENT TEAM IS CONSTANTLY WORKING ON EXPANDING THE GAME WORLD AND ADDING NEW CONTENT. FUTURE PLANS INCLUDE INTRODUCING NEW TYPES OF WHALES, MISSIONS, PLANETS TO EXPLORE, AND GAME MODES. PLAYERS CAN EXPECT REGULAR UPDATES THAT WILL MAKE THE GAMEPLAY EVEN MORE EXCITING AND DIVERSE.



GAMEPLAY OF "COSMO WHALES"

LEVELING UP

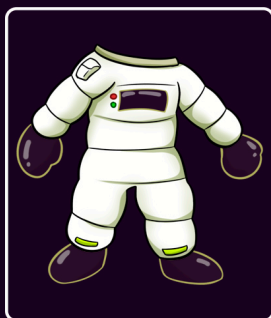
IN "COSMO WHALES," PLAYERS CAN DEVELOP THEIR COSMIC WHALES BY LEVELING THEM UP AND ENHANCING THEIR ABILITIES. LEVELING UP OCCURS THROUGH PARTICIPATING IN MISSIONS, BATTLES, AND COMPLETING VARIOUS TASKS. AS WHALES LEVEL UP, THEY GAIN ACCESS TO NEW ABILITIES AND UPGRADES, MAKING THEM STRONGER AND MORE RESILIENT. EACH LEVEL BRINGS NEW OPPORTUNITIES AND UNLOCKS MORE CHALLENGING AND REWARDING MISSIONS.

LVL	1	2	3	4	5	6	7	8	9	10
EXP	1	10	25	50	115	230	500	875	1500	5000

WEAPONS AND EQUIPMENT

TO SUCCESSFULLY COMPLETE MISSIONS AND BATTLES, PLAYERS CAN EQUIP THEIR WHALES WITH VARIOUS WEAPONS AND EQUIPMENT. THE GAME FEATURES A WIDE RANGE OF WEAPONS, FROM PLASMA CANNONS TO MISSILE LAUNCHERS, EACH WITH UNIQUE CHARACTERISTICS AND CAPABILITIES. ADDITIONALLY, PLAYERS CAN ACQUIRE AND UPGRADE SUITS FOR THEIR WHALES, WHICH ENHANCE THEIR DEFENSE AND ENDURANCE IN COMBAT.

SUITS



GK-01



GK-02



GK-03



GK-04



GK-05

GAMEPLAY OF "COSMO WHALES"



GH-01

ARMOR AND PROTECTION - 2,5 %
ADAPTATION TO CONDITIONS - 1.5%
REGENERATION SYSTEM - 2%
SENSOR SYSTEM - 250 m
SPACE NAVIGATION - 700 OG

GH-02

ARMOR AND PROTECTION - 3,5 %
ADAPTATION TO CONDITIONS - 2.5%
REGENERATION SYSTEM - 3%
SENSOR SYSTEM - 350 m
SPACE NAVIGATION - 800 OG

GH-03

ARMOR AND PROTECTION - 4,5 %
ADAPTATION TO CONDITIONS - 3.5%
REGENERATION SYSTEM - 5%
SENSOR SYSTEM - 500 m
SPACE NAVIGATION - 850 OG

GH-04

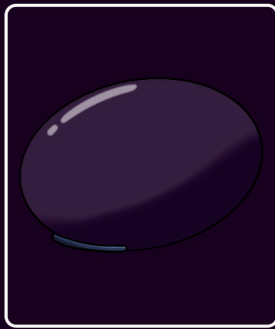
ARMOR AND PROTECTION - 5 %
ADAPTATION TO CONDITIONS - 4%
REGENERATION SYSTEM - 4%
SENSOR SYSTEM - 550 m
SPACE NAVIGATION - 750 OG

GH-05

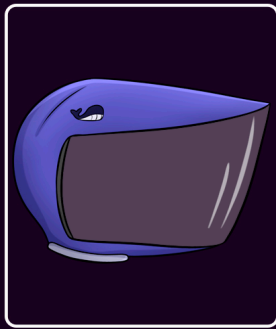
ARMOR AND PROTECTION - 10 %
ADAPTATION TO CONDITIONS - 7%
REGENERATION SYSTEM - 10.5%
SENSOR SYSTEM - 750 m
SPACE NAVIGATION - 1250 OG

GAMEPLAY OF "COSMO WHALES"

HELMET



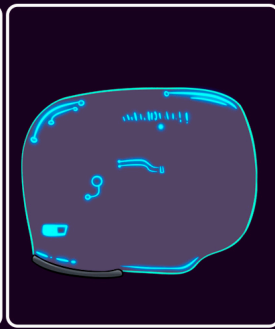
SC-01



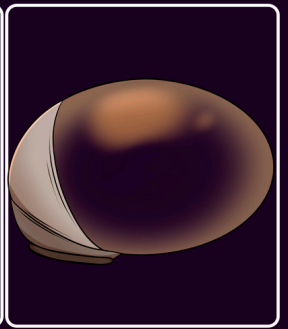
SC-02



SC-03



SC-04



SC-05

SC-01

ENHANCED PROTECTION - 1%
IMPROVED COMMUNICATION - 3.2%
ENHANCED VISION SYSTEM - 730 IL
PROTECTION AGAINST HARMFUL EFFECTS - 15%

SC-02

ENHANCED PROTECTION - 3%
IMPROVED COMMUNICATION - 5%
ENHANCED VISION SYSTEM - 670 IL
PROTECTION AGAINST HARMFUL EFFECTS - 13%

SC-03

ENHANCED PROTECTION - 7%
IMPROVED COMMUNICATION - 7.1%
ENHANCED VISION SYSTEM - 880 IL
PROTECTION AGAINST HARMFUL EFFECTS - 20%

SC-04

ENHANCED PROTECTION - 4%
IMPROVED COMMUNICATION - 2%
ENHANCED VISION SYSTEM - 1000 IL
PROTECTION AGAINST HARMFUL EFFECTS - 17%

GAMEPLAY OF "COSMO WHALES"

SC-05

ENHANCED PROTECTION - 12%

IMPROVED COMMUNICATION - 9%

ENHANCED VISION SYSTEM - 700 IL

PROTECTION AGAINST HARMFUL EFFECTS - 25%

GUNS



P-01



P-02



P-03



P-04



P-05

P-01

HIGH FIREPOWER - 220 P

ACCURACY - 73%

RAPID FIRE RATE - 3100 UH

FIRING RANGE - 2371 M

P-02

HIGH FIREPOWER - 250 P

ACCURACY - 68%

RAPID FIRE RATE - 3300 UH

FIRING RANGE - 2150 M

GAMEPLAY OF "COSMO WHALES"

P-03

HIGH FIREPOWER - 320 P

ACCURACY - 81%

RAPID FIRE RATE - 2900 UH

FIRING RANGE - 1905 M

P-04

HIGH FIREPOWER - 400 P

ACCURACY - 88%

RAPID FIRE RATE - 3800 UH

FIRING RANGE - 2705 M

P-05

HIGH FIREPOWER - 550 P

ACCURACY - 80%

RAPID FIRE RATE - 3200 UH

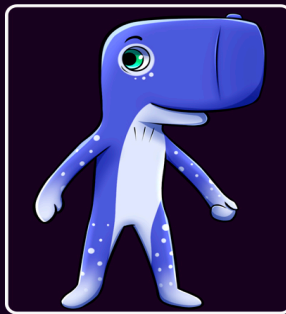
FIRING RANGE - 2500 M



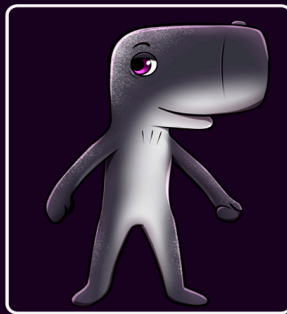
GAMEPLAY OF "COSMO WHALES"

HEROES

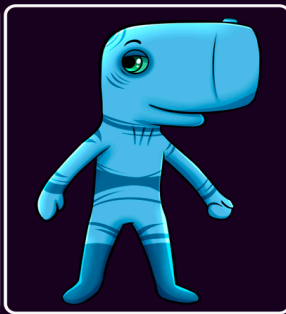
IN THE GAME, THERE ARE 13 HEROES, EACH WITH A UNIQUE STYLE AND NAME. DURING REGISTRATION, PLAYERS CAN CHOOSE ONE OF THE AVAILABLE HEROES, STARTING WITH A HERO NAMED TINI. LATER ON, PLAYERS CAN PURCHASE THE OTHER HEROES USING TOKENS WITHIN THE GAME.



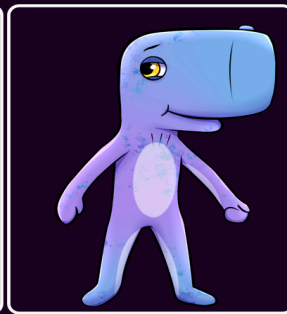
TINI



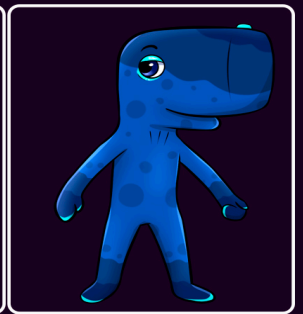
EXCAL



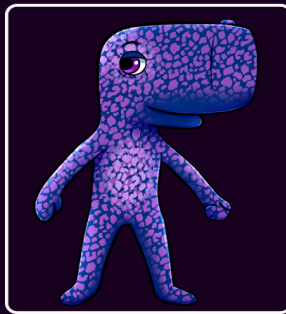
LUNARIS



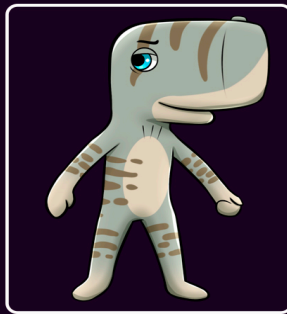
VIPER



ELECTRA



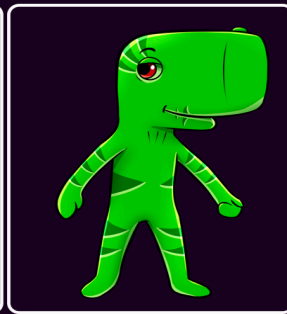
PHOENIX



NOKUS



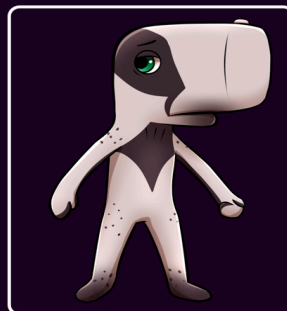
GRIMM



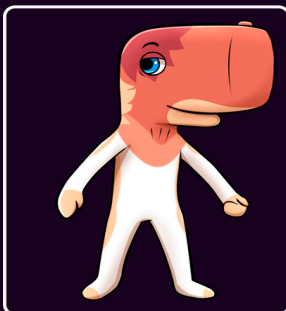
AURION



SCARLET



ZEPHYR



VALKYRIE



RAVEN

GAMEPLAY OF "COSMO WHALES"

TINI

HIGH FIREPOWER - 400 UNITS

ACCURACY - 88%

RAPID FIRE RATE - 3800 UH

FIRING RANGE - 2705 M

EXCAL

HIGH ARMOR - 450 UNITS

DAMAGE RESISTANCE - 90%

MOVEMENT SPEED - 3400 UNITS

ATTACK - 500 UNITS

LUNARIS

MAGICAL POWER - 380 UNITS

ELEMENTAL RESISTANCE - 85%

SPELLCASTING SPEED - 4000 UNITS

MAGIC RANGE - 3000 METERS

VIPER

TOXICITY - 420 UNITS

THROWING ACCURACY - 92%

MOVEMENT SPEED - 3600 UNITS

THROWING RANGE - 2500 METERS

ELECTRA

ELECTRIC SHOCK - 390 UNITS

ELECTRIC ATTACK RESISTANCE - 87%

ATTACK SPEED - 3700 UNITS

RANGE OF ATTACK - 2800 METERS

GAMEPLAY OF "COSMO WHALES"

PHOENIX

REGENERATION - 410 UNITS

FIRE RESISTANCE - 89%

FLIGHT SPEED - 3500 UNITS

RANGE OF FIRE ATTACKS - 2600 METERS

NOKUS

DARKNESS - 380 UNITS

MAGIC DEFENSE - 86%

VAMPIRISM SPEED - 3800 UNITS

RANGE OF SHADOW ATTACKS - 2700 METERS

GRIMM

CURSE - 430 UNITS

CURSE RESISTANCE - 88%

SUMMONING SPEED - 3600 UNITS

RANGE OF CURSE EFFECTS - 2800 METERS

AURION

LIGHT - 400 UNITS

DARKNESS RESISTANCE - 90%

HEALING SPEED - 3700 UNITS

RANGE OF LIGHT ATTACKS - 2600 METERS

SCARLET

BLEEDING - 420 UNITS

BLEEDING RESISTANCE - 87%

BATTLE SPEED - 3800 UNITS

RANGE OF BLEEDING ATTACKS - 2700 METERS

GAMEPLAY OF "COSMO WHALES"

ZEPHYR

WIND - 390 UNITS
WIND RESISTANCE - 88%
FLIGHT SPEED - 3600 UNITS
RANGE OF WIND ATTACKS - 2800 METERS

VALKYRIE

ETHEREAL - 410 UNITS
ETHEREAL RESISTANCE - 89%
ATTACK SPEED - 3700 UNITS
RANGE OF ETHEREAL ATTACKS - 2600 METERS

RAVEN

SHADOW - 380 UNITS
SHADOW RESISTANCE - 86%
STEALTH SPEED - 3800 UNITS
RANGE OF SHADOW ATTACKS - 2700 METERS

EACH HERO POSSESSES UNIQUE ABILITIES THAT CAN BE USED IN BATTLES AND MISSIONS WITHIN THE GAME "COSMO WHALES," PROVIDING PLAYERS WITH A WIDE RANGE OF TACTICAL OPTIONS WHEN CHOOSING A CHARACTER.

WALLET AND TOKEN

ABOUT OUR WHALE TOKEN ON BINANCE SMART CHAIN (BSC)

WHALE IS A UNIQUE TOKEN DEVELOPED ON THE BINANCE SMART CHAIN (BSC) SPECIFICALLY FOR THE "COSMO WHALES" UNIVERSE. THE WHALE TOKEN PLAYS A KEY ROLE IN THE GAME'S ECONOMY AND OFFERS NUMEROUS OPPORTUNITIES FOR PLAYERS AND INVESTORS.

KEY FEATURES AND BENEFITS OF THE WHALE TOKEN: ECONOMIC FOUNDATION

WHALE IS THE MAIN MEDIUM OF EXCHANGE IN THE "COSMO WHALES" GAME. IT CAN BE USED TO PURCHASE HEROES, UPGRADES, EQUIPMENT, AND OTHER GAME ELEMENTS.

SPEED AND LOW FEES

BINANCE SMART CHAIN ENSURES HIGH TRANSACTION SPEEDS AND LOW FEES, MAKING THE USE OF THE WHALE TOKEN FAST AND COST-EFFECTIVE FOR ALL PARTICIPANTS.

OWNERSHIP AND MANAGEMENT

THE WHALE TOKEN ALLOWS PLAYERS TO OWN AND MANAGE THEIR IN-GAME ASSETS ON THE BLOCKCHAIN, ENSURING THE SECURITY AND TRANSPARENCY OF ALL TRANSACTIONS.

NON-FUNGIBLE TOKENS (NFTS)

USING THE WHALE TOKEN, PLAYERS CAN BUY AND SELL UNIQUE SPACE WHALES AND OTHER NFTS, WHICH HAVE REAL VALUE AND CAN BE TRADED ON OPEN MARKETS.

WALLET AND TOKEN

GAME BONUSES AND REWARDS

HOLDING WHALE TOKENS PROVIDES ACCESS TO EXCLUSIVE BONUSES, EVENTS, AND REWARDS WITHIN THE GAME. THIS MAY INCLUDE SPECIAL MISSIONS, RARE ITEMS, AND UNIQUE ABILITIES.

PARTICIPATION IN PROJECT DEVELOPMENT

WHALE TOKEN HOLDERS CAN VOTE ON KEY ISSUES REGARDING THE DEVELOPMENT OF THE GAME, INFLUENCING THE FUTURE OF "COSMO WHALES" AND ACTIVELY PARTICIPATING IN THE COMMUNITY.

PAYMENT CAPABILITIES

THE WHALE TOKEN CAN BE EASILY EXCHANGED FOR OTHER CRYPTOCURRENCIES OR FIAT MONEY THROUGH SUPPORTED EXCHANGES AND PLATFORMS, ENSURING FLEXIBILITY AND CONVENIENCE IN ITS USE.

SECURITY AND SAFETY

ALL TRANSACTIONS USING THE WHALE TOKEN ARE SECURE AND TRANSPARENT, THANKS TO ADVANCED BLOCKCHAIN TECHNOLOGIES PROVIDED BY BINANCE SMART CHAIN. THIS ENSURES THE RELIABILITY AND SAFETY OF ALL OPERATIONS.

WALLET AND TOKEN

ABOUT OUR INTERNAL WALLET

IN THE "COSMO WHALES" GAME, EACH PLAYER HAS ACCESS TO AN INTERNAL WALLET THAT PROVIDES CONVENIENT AND SECURE MEANS TO MANAGE WHALE TOKENS AND OTHER IN-GAME ASSETS.

FEATURES OF THE INTERNAL WALLET:

EASE OF USE

THE INTERNAL WALLET IS INTEGRATED DIRECTLY INTO THE GAME CLIENT, ALLOWING EASY MANAGEMENT OF WHALE TOKEN BALANCES AND OTHER GAME ASSETS.

SECURITY

ALL TRANSACTIONS WITHIN THE WALLET ARE PROTECTED BY ADVANCED BLOCKCHAIN TECHNOLOGIES, ENSURING THE SECURITY AND TRANSPARENCY OF ALL OPERATIONS.

ASSET MANAGEMENT

PLAYERS CAN VIEW THEIR BALANCES, TRANSFER WHALE TOKENS, AND MAKE IN-GAME PURCHASES USING THE INTERNAL WALLET.

BALANCE WITHDRAWAL

TO ENHANCE SECURITY AND PROTECT AGAINST FRAUDULENT OPERATIONS, "COSMO WHALES" HAS IMPLEMENTED A PROCEDURE FOR CONFIRMING BALANCE WITHDRAWAL REQUESTS

WALLET AND TOKEN

WITHDRAWAL REQUEST CONFIRMATION

TO WITHDRAW WHALE TOKENS FROM THE INTERNAL WALLET, THE PLAYER MUST SUBMIT A WITHDRAWAL REQUEST THROUGH THE GAME CLIENT.

CONFIRMATION PROCESS

AFTER SUBMITTING THE WITHDRAWAL REQUEST, THE PLAYER MUST

CONFIRM IT THROUGH THE GAME CLIENT. THIS ENSURES THAT ONLY THE ACCOUNT OWNER CAN INITIATE A WITHDRAWAL.

SECURITY AND PROTECTION

THIS CONFIRMATION PROCESS HELPS PROTECT PLAYERS' ACCOUNTS

FROM UNAUTHORIZED ACCESS AND PROVIDES AN ADDITIONAL LEVEL OF SECURITY FOR FUND WITHDRAWALS.

OUR INTERNAL WALLET AND WITHDRAWAL REQUEST CONFIRMATION SYSTEM ENSURE CONVENIENT AND SECURE ASSET MANAGEMENT, ALLOWING PLAYERS TO FULLY CONTROL THEIR WHALE TOKENS AND ENJOY ALL THE BENEFITS OF THE "COSMO WHALES" GAME.

The screenshot displays a wallet interface with a dark theme. At the top, it shows the 'TOTAL BALANCE' as '\$1,234'. Below this, the 'Your wallet address' is shown as '0x2B5581e...6401948' with a 'COPY' button. A table lists the following tokens:

Token	Network	Amount	
BNB	BEP-20	1,1932 784 USD	SEND
USDT	BEP-20	120 120 USD	SEND
WHALE	BEP-20	13,213 73 USD	SEND
BTC	BITCOIN	0,00231 66 USD	SEND
ETH	ERC-20	0,0781 259 USD	SEND

IN DEVELOPMENT

